



Remittance Survey

**Institute of Certified Construction Industry
Financial Professionals**

October 27, 2015

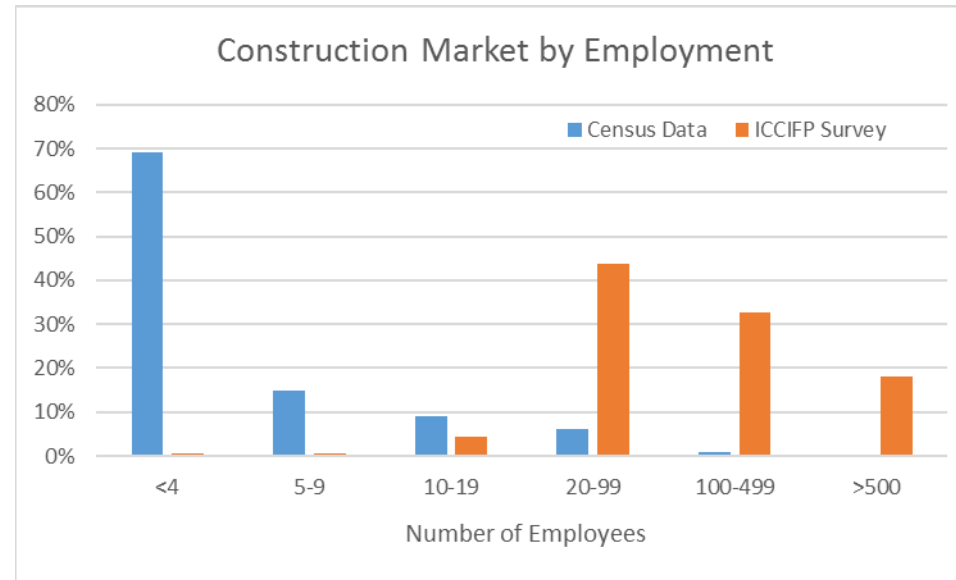
*Chris Zaucha, CCIFP
Executive Director, ICCIFP*

*Chuck Elyea, CCIFP
Founder, ShareMyToolbox*



Methodology

The survey was posted September 28th, 2015 on the CFMA *Bottom Lines* newsletter reaching approximately 7000 members and emailed to 950 CCIFPs. We closed the survey on October 14th with 165 respondents as follows:

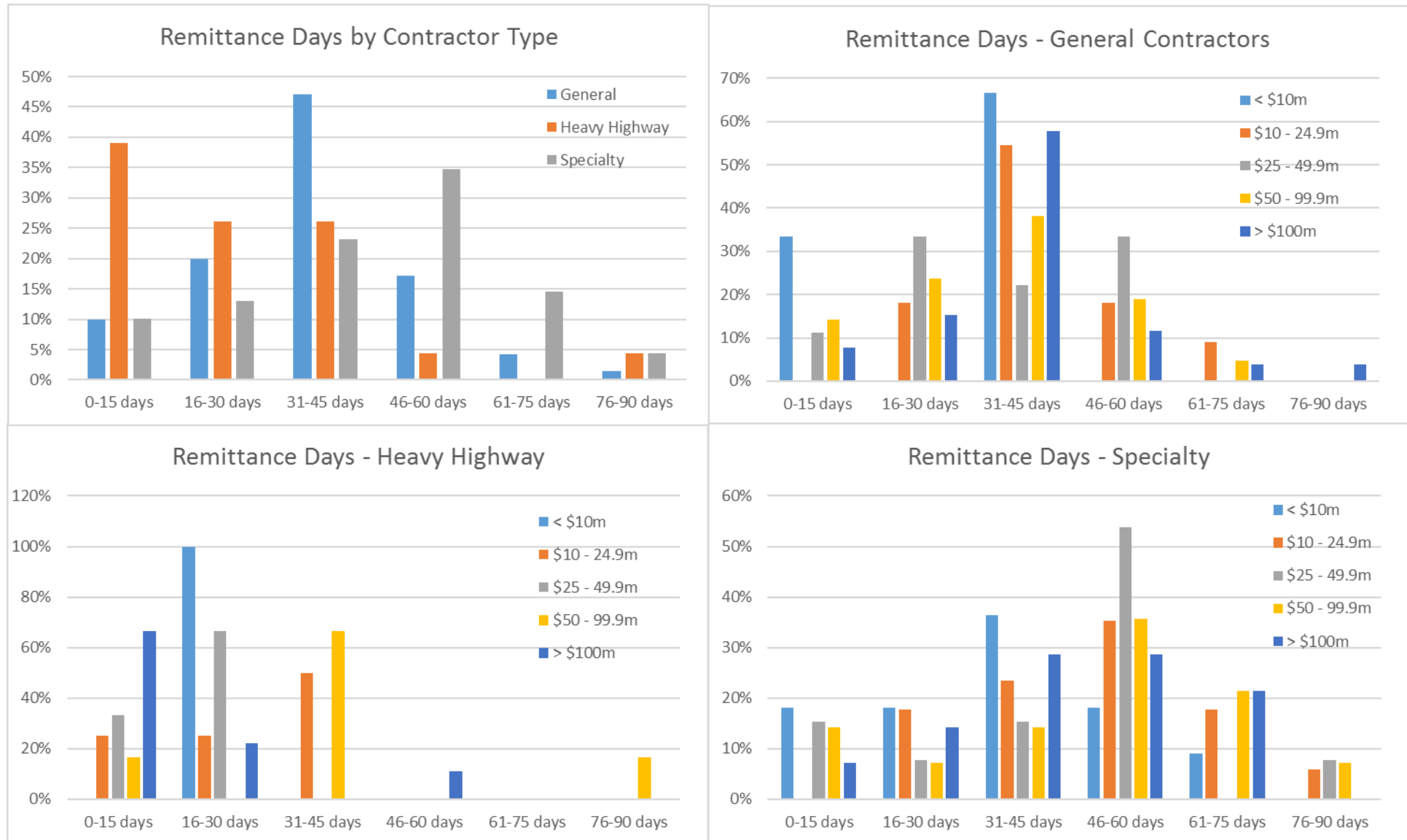


General	70
Heavy/Highway/Civil	23
Specialty	72
	<hr/>
	165

Since the sample was targeted at CFMA membership and CCIFPs, the results are skewed towards larger contractors and do not represent the market in general according to the last US government census.

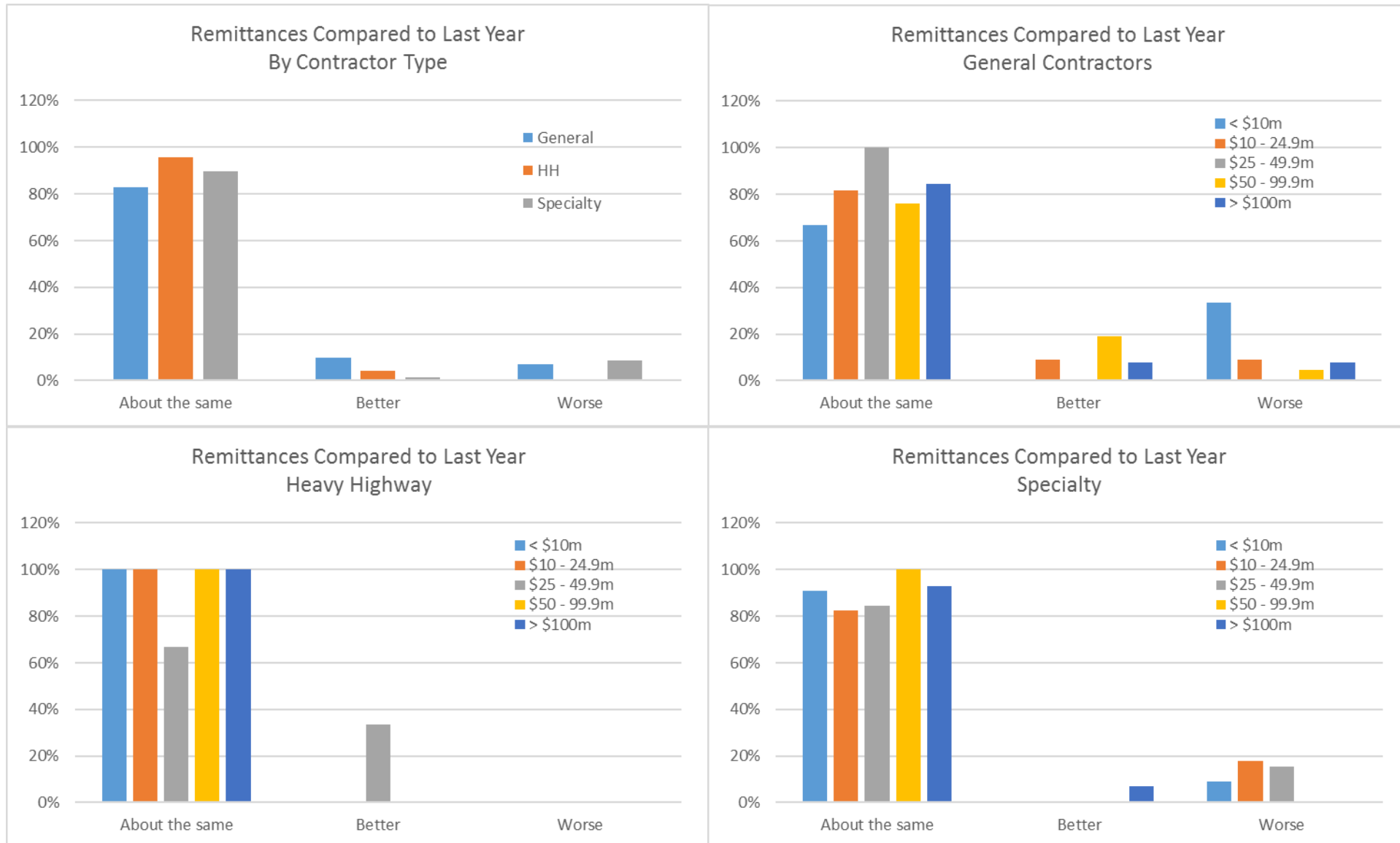
On average, how long does it take your company to remit payment to subcontractors?

3 respondents (specialty) skipped question



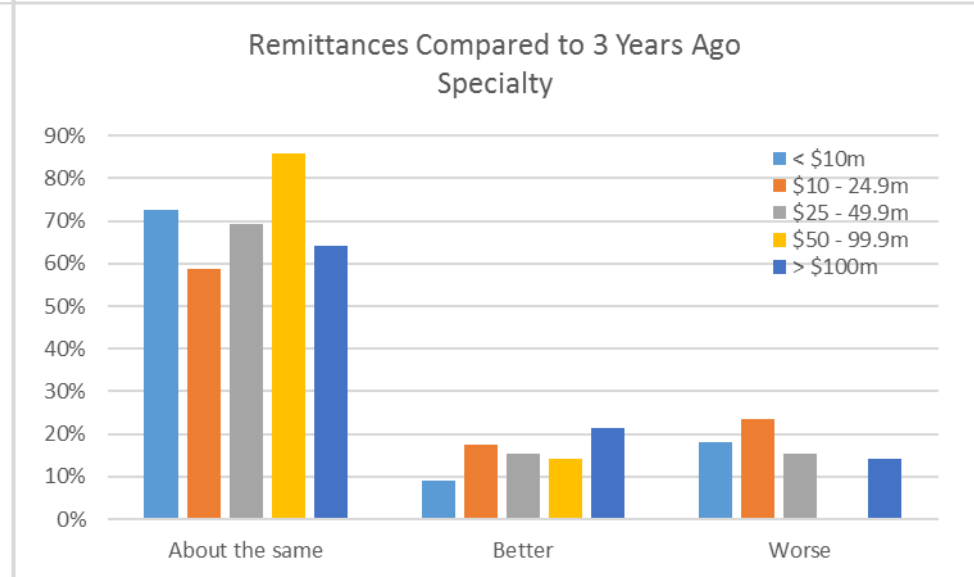
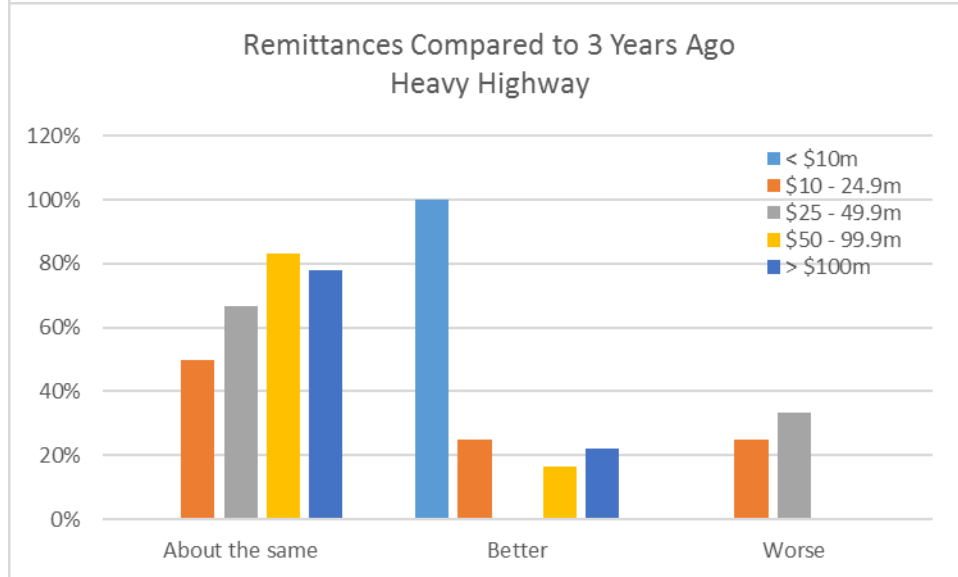
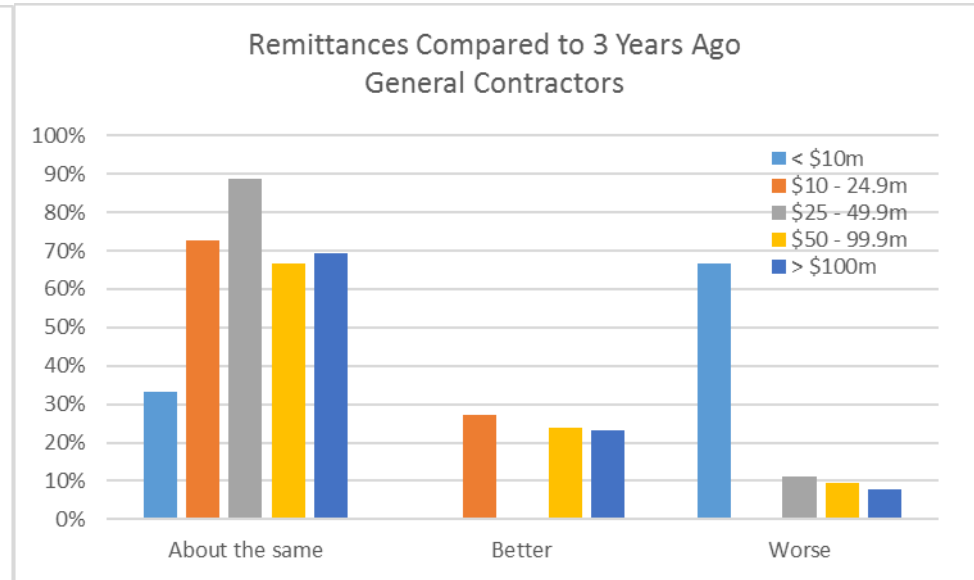
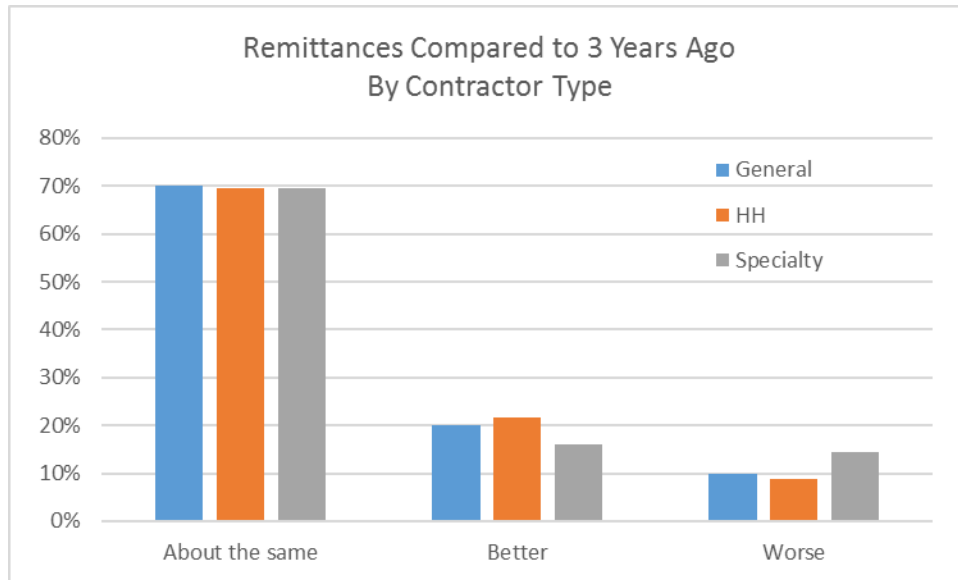
How does your current remittance time to subcontractors compare to last year?

3 respondents (specialty) skipped question



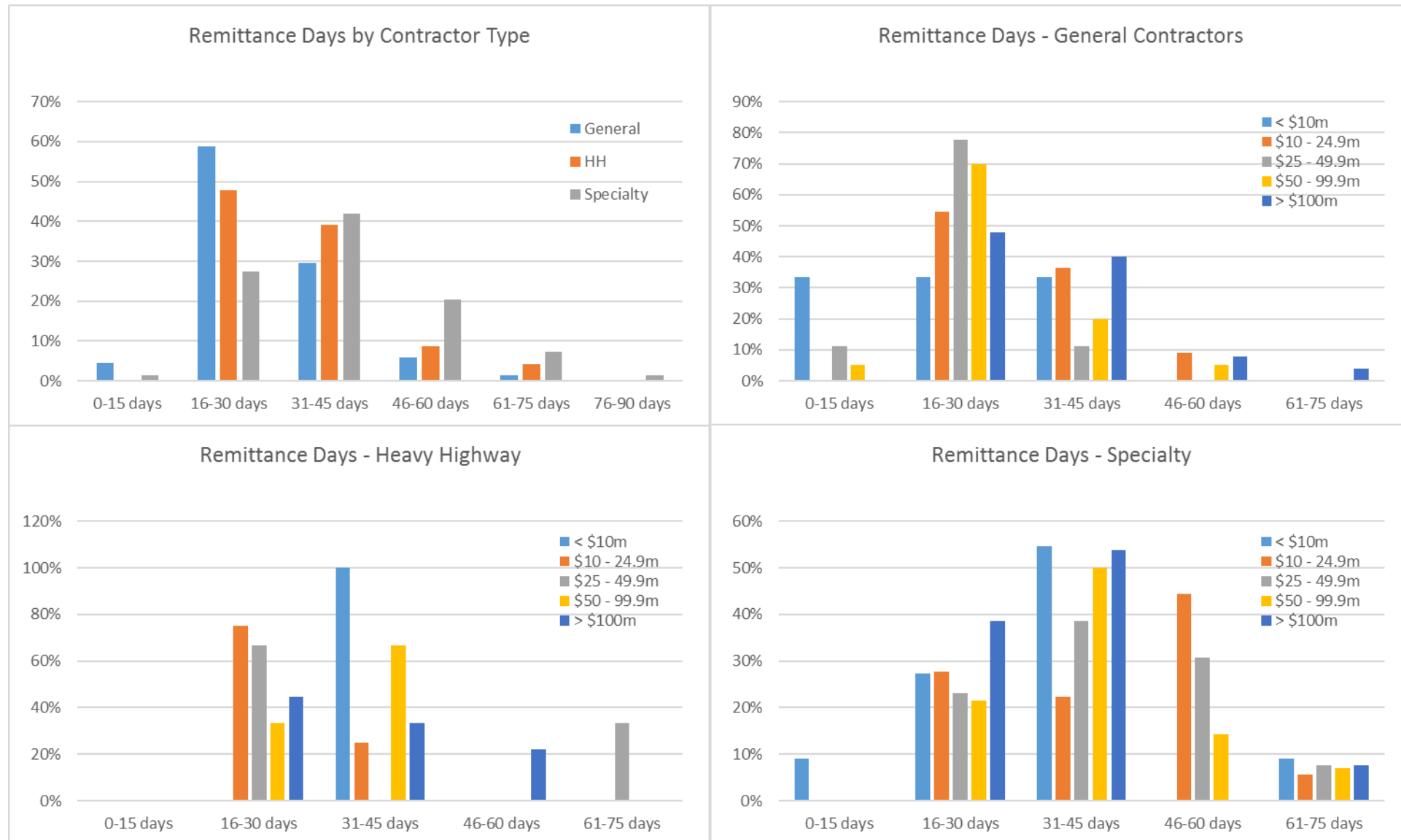
How does your current remittance time to subcontractors compare to three years ago?

3 respondents (specialty) skipped question



On average, how long does it take your company to remit payment to suppliers/vendors?

5 respondents (2-general, 3-specialty) skipped question



How does your current remittance time to suppliers/vendors compare to last year?

5 respondents (2-general, 3-specialty) skipped question



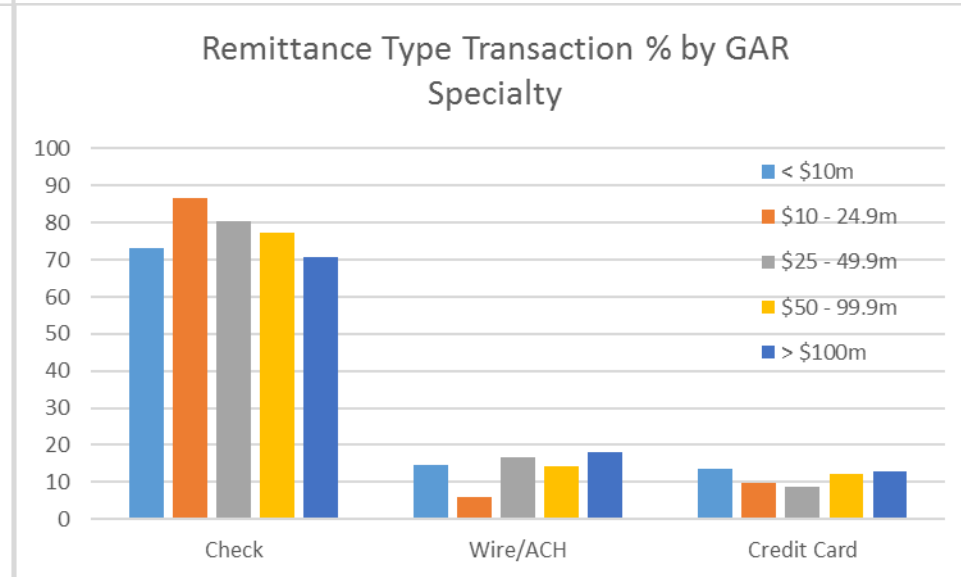
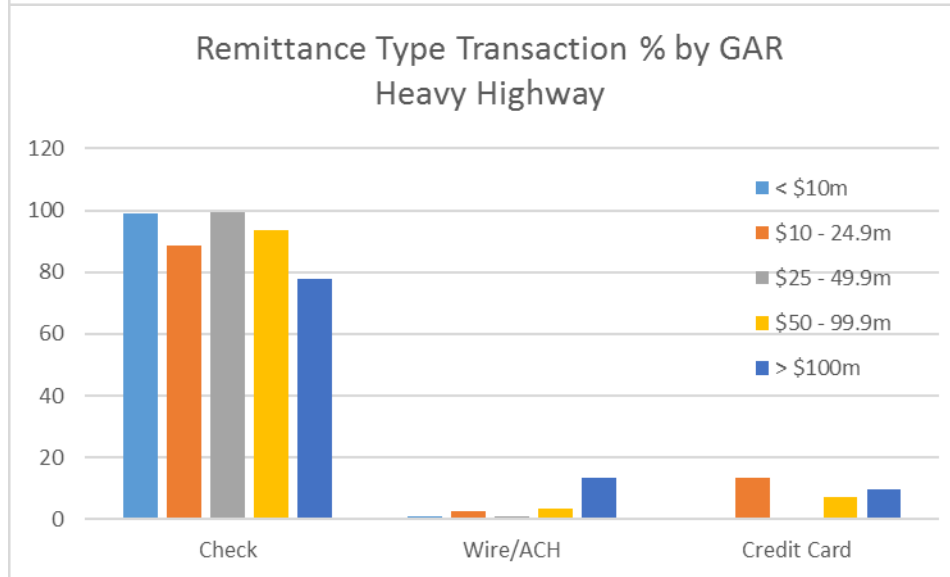
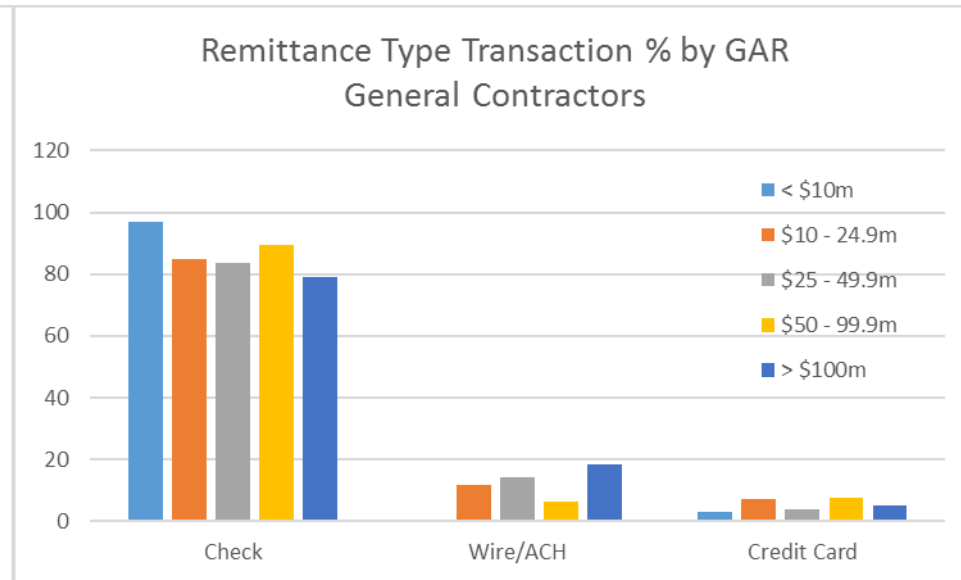
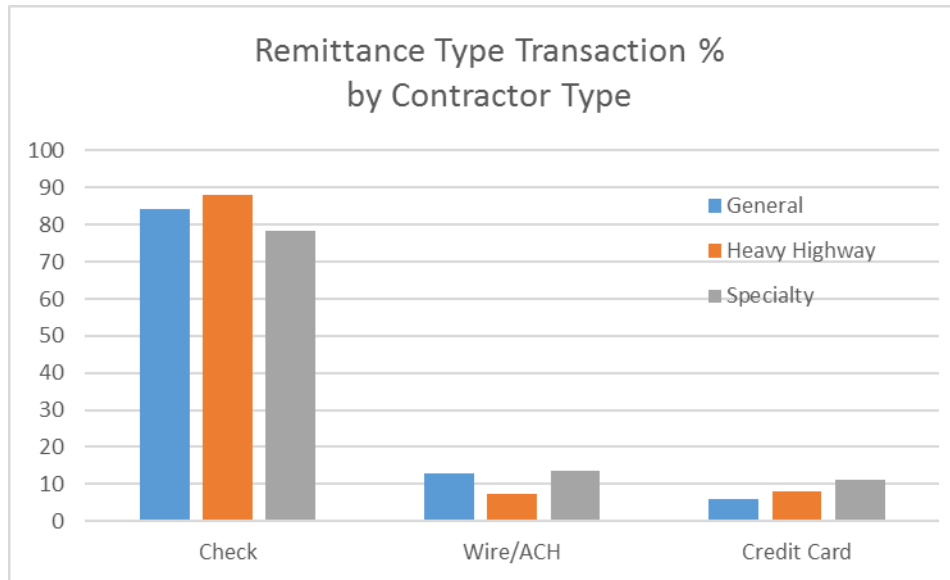
How does your current remittance time to suppliers/vendors compare to three years ago?

5 respondents (2-general, 3-specialty) skipped question



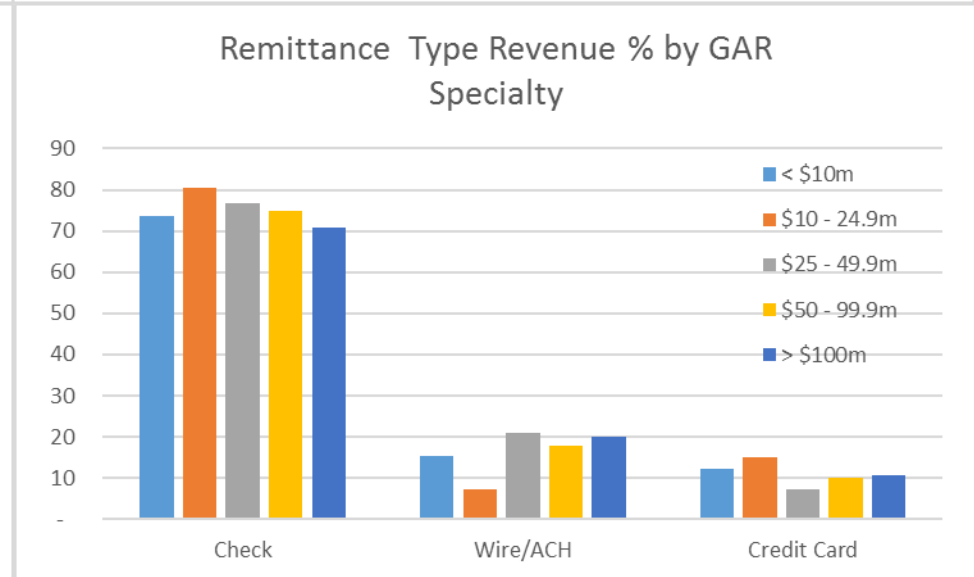
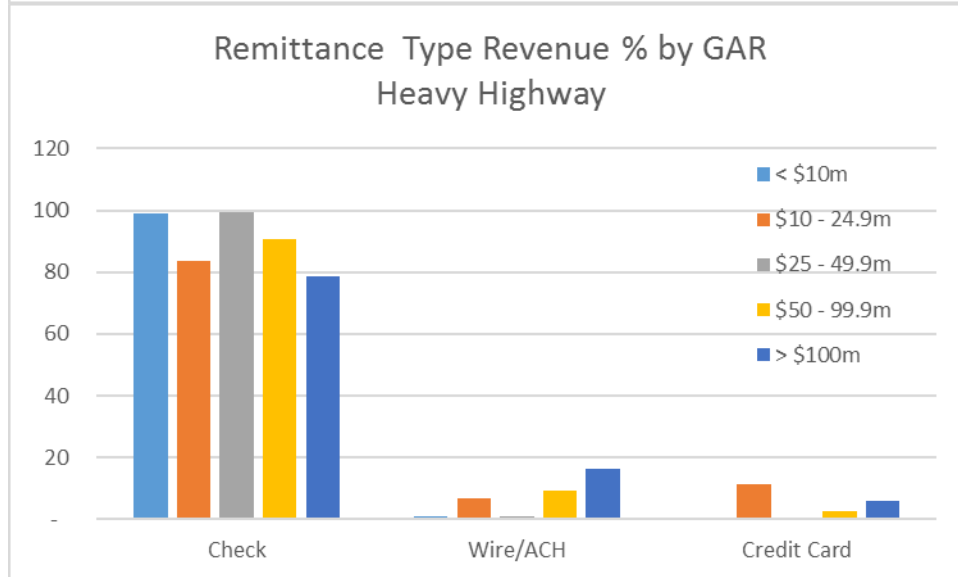
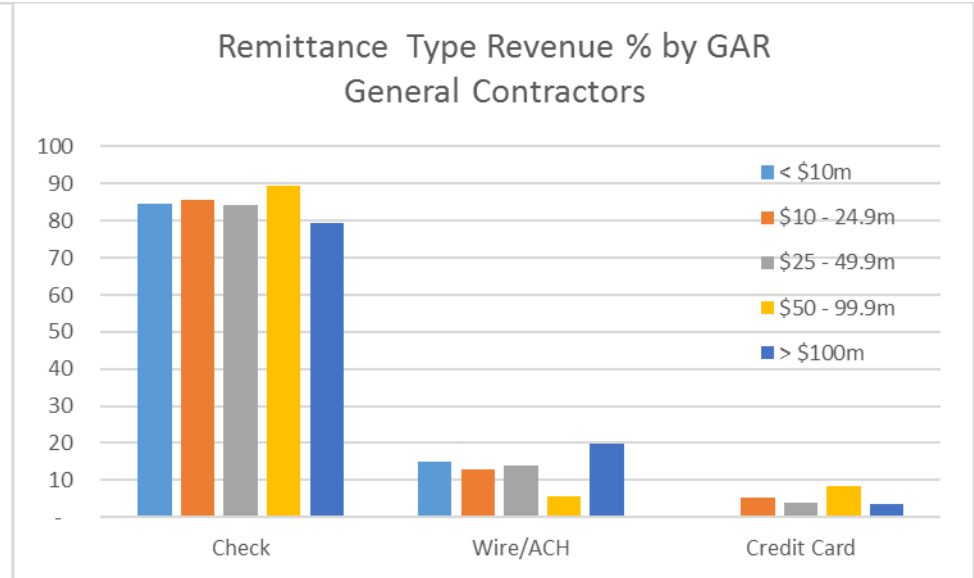
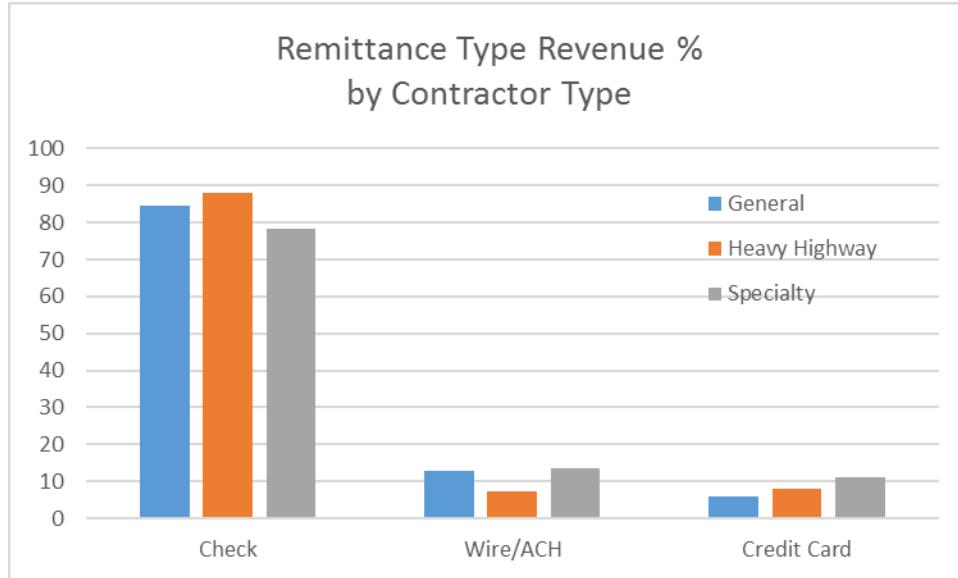
Of all remittance *transactions* you made during the last year, what percent were checks, what percent were ACH/wire, and what percent were credit card?

9 respondents (4-general, 4-specialty, 1-hh) skipped question
 GAR = Gross Annual revenue

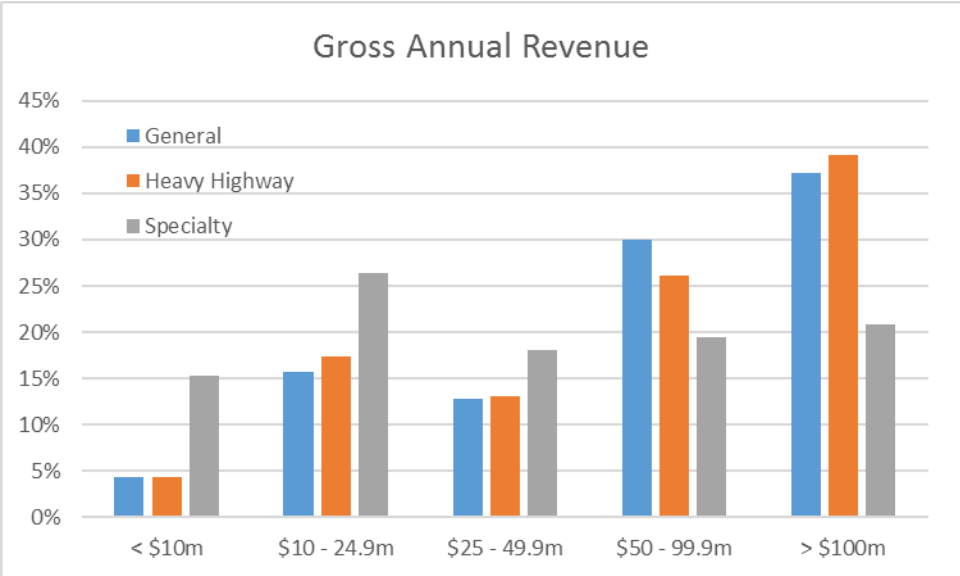


When considering your *total* remittances for the last year, what percent were checks, what percent were ACH/wire, and what percent were via credit card?

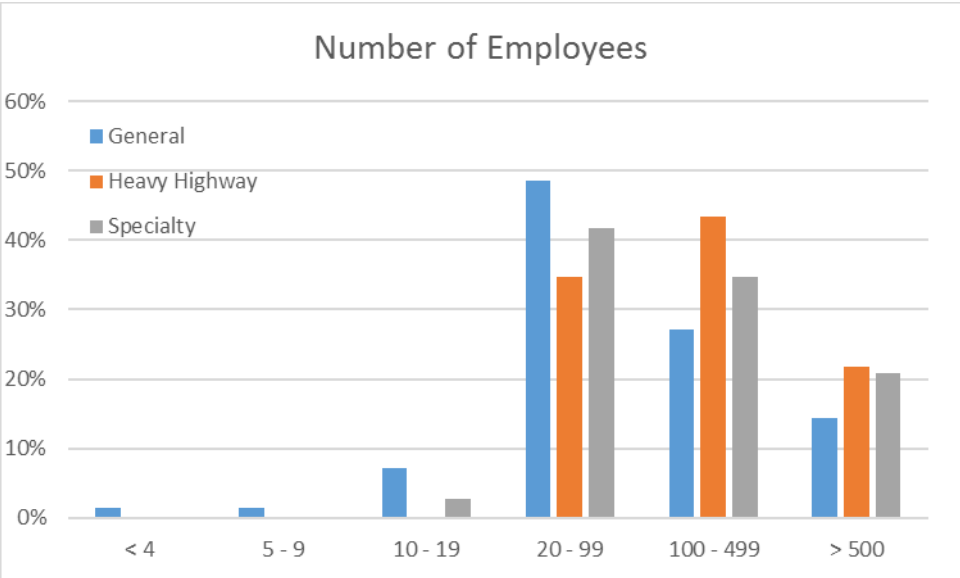
9 respondents (4-general, 4-specialty, 1-hh) skipped question
GAR = Gross Annual revenue



Survey respondents by gross annual revenue



Survey respondents by number of employees



For comments, questions or suggestions for
future surveys, please contact:

Chris Zaucha

Executive Director, ICCIFP

Direct: (609) 945-2419

Email: czaucha@iccifp.org